

WHITEHALL  
LANE

ESTATE VINEYARDS







*Leonardini Family - Tom Sr., Katie, Karen, Kristen, Tom Jr.*





# WHITEHALL LANE

## *Our History*

---

**W**hitehall Lane is a small, family owned winery in Napa Valley's historic Rutherford appellation. We grow 157,435 grape vines in our eight estate vineyards including the Leonardini Vineyard in St. Helena. We are dedicated to growing and making the finest Cabernet Sauvignon, Merlot, Pinot Noir, Sauvignon Blanc and Chardonnay, using Napa Green certified and sustainable practices.

Our winery continues to receive accolades and awards for producing exceptional, world-class wines. In Wine Spectator Magazine's year-end ranking of wines, Whitehall Lane has been honored three times for producing wines rated among the top five in the world. Our winery was voted Winery of the Year by Wine and Spirits Magazine and our tasting room was also voted Best Tasting Room in Napa Valley by *Napa Valley Life Magazine*.

The winery was founded in 1979, but the history

of the soil cultivation dates back two centuries. In the mid 1800's, Napa Valley settlers were drawn to the gravelly loam soils and ideal climate, planting high quality grape vines at the Whitehall Lane Winery site. In 1979, two brothers built the winery and directed their winemaking efforts successfully to Merlot and Cabernet Sauvignon. They named the winery after the road that runs along the southern border of the property, Whitehall Lane.

In 1993, our family, the Leonardini Family purchased the Whitehall Lane Winery estate. We immediately updated the winemaking and barrel aging program and continue to innovate and grow by utilizing a scientific and sustainable approach in the vineyards and at the winery. We now own eight prime vineyards totaling just under 200 acres that are the cornerstone on which the wines are made. They include two vineyards in the St. Helena Appellation, three vineyards (including the winery) in the Rutherford Appellation, one vineyard in the Oak Knoll District of Napa Valley, one in Sonoma Valley and more recently a vineyard in the Petaluma Gap Appellation. All vineyards are farmed utilizing sustainable green practices to produce the finest grapes and all wine is made at our Napa Green estate winery in St. Helena.

*The Leonardini Family follows a successful equation at  
Whitehall Lane Winery: grow the best grapes to make the best wine.*



# WHITEHALL LANE

*Jason Moulton, Winemaker*



*“It is wonderful to have a winemaker with a wealth of worldly wine experience,” says owner Katie Leonardini. “Jason brought new ideas and processes and has embraced our focus on environmental sustainability from the soil to the bottle. And the wines are fantastic!”*

Jason Moulton is a hands-on winemaker utilizing the knowledge he has gained at wineries across the globe. “I learned a huge amount while working with some talented people all over the world,” recalls Jason. “I use these invaluable experiences to glean the best out of Whitehall Lane’s vineyards every single year.”

The Leonardini Family introduced Jason Moulton as their winemaker in 2016. He was excited to join the Whitehall Lane team because of the Leonardini’s commitment to their sustainable traditions in their vineyards and winemaking. He has immersed himself in the nuances of the eight estate vineyards, energized the winemaking team and elevated wine quality. He also brought a keen interest and understanding of environmentally sensitive and sustainable winemaking.

Through the years, Jason has ascended the ranks from cellar worker to cellar master, assistant winemaker to winemaker. He started his winemaking career in Rutherford, traversed the world and is back in Rutherford making his mark with world-class wines. He graduated from the Lincoln University Viticulture and Enology program in New Zealand and spent more than a dozen years making wine in Napa Valley, Russian River, Canada, New Zealand, Bordeaux and South Africa. He has worked with renowned winemakers Philippe Melka, David Ramey, Kale Anderson and Ashley Heisey.

“It is wonderful to have a winemaker with a wealth of worldly wine experience,” says owner Katie Leonardini. “Jason brought new ideas and processes and has embraced our focus on environmental sustainability from the soil to the bottle. And the wines are fantastic!”







# WINERY VINEYARD 1979

*Rutherford - Napa Valley*

---

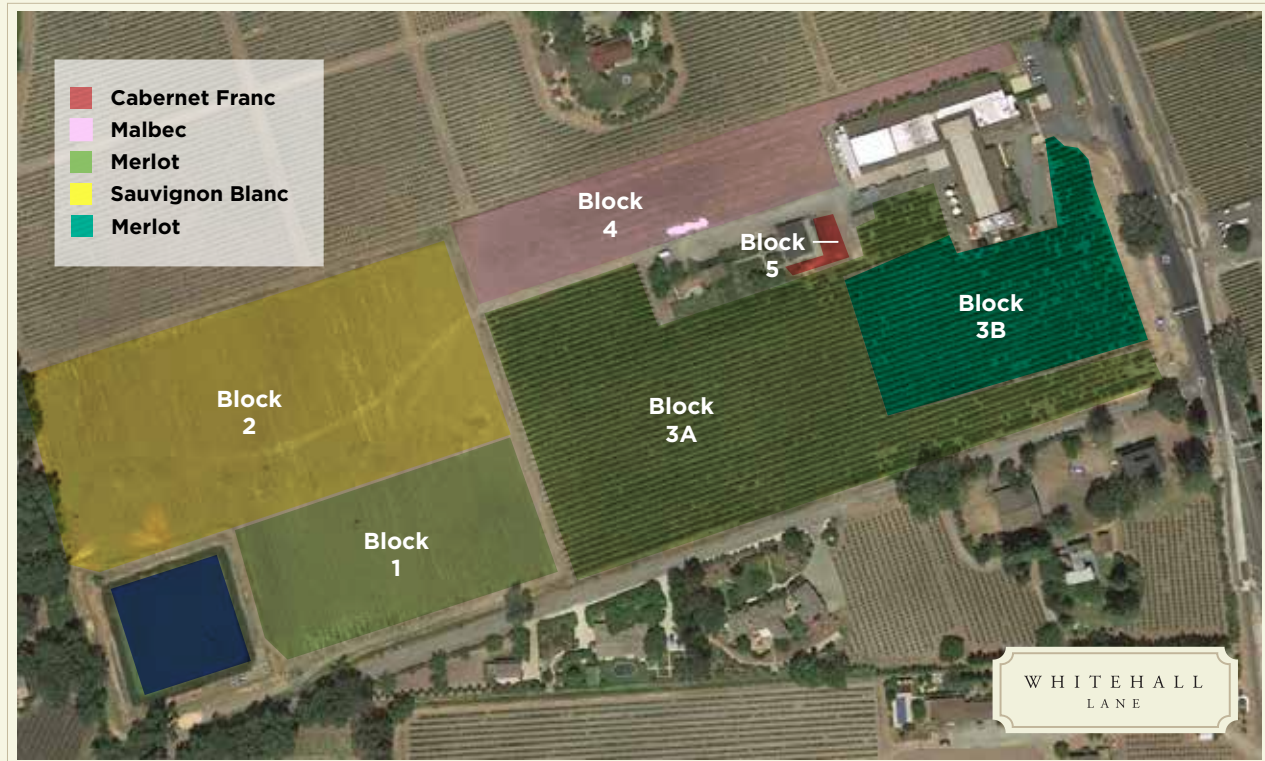


**T**his ranch may be called Vineyard 1979 but the history of this property goes back much further. Napa Valley settlers were drawn to the soils and ideal climate, planting grapevines at the Whitehall Lane Winery site more than 150 years ago. Located in the center of Napa Valley on the western side of Highway 29, this site provides loam and gravelly soils and full sun exposure for growing exceptional grapes. The vineyard changed hands a number of times through the years. Guiseppe and Rosalie Baranzini owned the property in the 1940's and 1950's. In the mid-1970's, Davis Bynum controlled the property but couldn't get a winery permit and sold it to Howard Allen. Allen also made an unsuccessful bid to put a winery on the property and sold it to Art Finkelstein and Alan

Steen. It was Finkelstein and Steen who successfully built Whitehall Lane Winery on the 25-acre vineyard in 1979. The winery and vineyard have been owned by the Leonardini Family of St. Helena since 1993.

The Winery Estate Vineyard is currently planted to Merlot, Sauvignon Blanc, Malbec and Cabernet Franc. A little more than half of the vineyard was replanted in 2017 and the balance in 2020. Merlot has grown spectacularly at this site for more than 50 years and makes up the largest blocks. Flavorful Sauvignon Blanc grapes have grown for more than 25 years at this location and a well matched rootsock was chosen when the block was replanted in 2017. Malbec and Cabernet Franc are new varieties added at the site for inclusion in Whitehall Lane's red blends including the winery's ultra premium "V" Wine Program.

# WINERY VINEYARD 1979



BLOCK	VARIETAL	CLONE	ROOTSTOCK	VINE SPACING	COUNT	ACRES PLANTED	DATE PLANTED
1	Merlot	3	GRN3	7 x 5	3,401	2.73	2017
2	Sauvignon Blanc	1	039-16	7 x 5	6,176	4.96	2017
3A	Merlot	15	039-16	7 x 5	7,580	6.09	2020
3B	Merlot	15	1103P	7 x 5	2,826	2.27	2020
4	Malbec	596	1616C	7 x 5	2,793	2.24	2017
5	Cabernet Franc	12	1103P	5 x 4	244	.11	2017
<b>Total Vines:</b>					<b>23,020</b>		
<b>Total Acres:</b>						<b>25.30</b>	

# MILLENNIUM MM VINEYARD

*Rutherford - Napa Valley*

---



The Leonardini Family purchased the Millennium MM Vineyard in the year 2000: a milestone acquisition in a milestone year. This 20-acre vineyard is located less than one-half mile from Whitehall Lane Winery on the northwest edge of the Rutherford Appellation. This vineyard has a storied history of producing Reserve-style Cabernet Sauvignon grapes for some of Napa Valley's notable and distinguished wineries. Historic Napa Valley pioneers like Lori Wood and Andre Tchelistcheff of Freemark Abbey and Beaulieu Vineyards walked this vineyard and made wine with grapes from this site. It was replanted in the late 1980's to AXR1 by George

Linton and was in decline due to phylloxera when Whitehall Lane Winery purchased the property.

Starting in 2003, Whitehall Lane began replanting the vineyard. Using a scientifically engineered machine to profile the soils throughout the vineyard, new vineyard blocks were established based on soil criteria. With these results, sub-blocks were created that were planted with ideally matched rootstocks and clones in an effort to grow grapes with optimum complexity and flavor. Each block also has its own irrigation system to meter out water during the growing season. Row orientation and trellis systems were also matched to better suit growth and sun exposure.



## MILLENNIUM MM VINEYARD



BLOCK	VARIETAL	CLONE	ROOTSTOCK	VINE SPACING	COUNT	ACRES PLANTED	DATE PLANTED
1	Cabernet Sauvignon	4	101-14	9 x 5	4,041	4.17	2003
2	Cabernet Sauvignon	169	101-14	8 x 5	2,180	2.00	2008
3	Cabernet Sauvignon	337	101-14	8 x 5	2,143	1.97	2008
4	Cabernet Sauvignon	15	SO4	8 x 5	2,808	2.58	2008
5	Cabernet Sauvignon	30	SO4	8 x 5	2,819	2.59	2008
6	Cabernet Sauvignon	7	SO4	8 x 5	3,507	3.22	2008
<b>Total Vines:</b>					<b>17,498</b>		
<b>Total Acres:</b>						<b>19.04</b>	



# BOMMARITO VINEYARD

*Rutherford - Napa Valley*

---



The Bommarito Vineyard is located on Galleron Road in the Rutherford Appellation of Napa Valley. It has produced outstanding grapes since the early 1920's when Dominic Bommarito purchased the Rutherford property to plant a vineyard and build a summer home.

The Vineyard is planted to three different grape varieties. The rootstocks in this vineyard were matched to the various soil types, two different spacing and trellis systems were implemented and grape clones were selected to yield ultimate fruit flavors.

Dominic Bommarito was born in Sicily in 1889 and immigrated to the United States in 1903. In the early 1920's he began construction on his summer home and moved to this Rutherford estate permanently in 1929 with his wife, four children and moth-

er. He built five additional homes on the property between 1941 and 1953. Many of the furnishings in the houses were acquired from surplus at Mare Island Naval Ship Yard, including sinks and plumbing. Dominic Bommarito was a founding member of the Napa Valley Co-Op and farmed his vineyard until his death in 1963. His wife, Carmen Bommarito, tended to the vineyard until her death in December, 1994. Working by her side was son Salvatore "Toots" Bommarito. Toots spent most of his life on the property, working in the vineyard, tending to the properties and establishing "Toots Stories" too numerous to explore.

Whitehall Lane Winery continues to call the property the Bommarito Vineyard, recognizing the wonderful history of the Napa Valley, its pioneers and its characters.



## BOMMARITO VINEYARD



BLOCK	VARIETAL	CLONE	ROOTSTOCK	VINE SPACING	COUNT	ACRES PLANTED	DATE PLANTED
1A	Cabernet Sauvignon	4	Schwarzmann	8 x 5	4,406	4.05	2000
1B	Cabernet Sauvignon	4	Borner	8 x 5	3,628	3.33	2000
2A	Semillon	3	5C	8 x 5	2,111	1.94	2000
2B	Sauvignon Blanc	Muscat	5C	8 x 5	3,919	3.60	2000
3A	Sauvignon Blanc	Muscat	039-16	9 x 6	3,485	4.32	2000
3B	Sauvignon Blanc	Muscat	101-14	9 x 6	2,623	3.25	2000
4	Cabernet Sauvignon	337	5C	6 x 4	374	0.21	2000
<b>Total Vines:</b>					<b>20,546</b>		
<b>Total Acres:</b>						<b>23.39</b>	



*“Whitehall Lane Winery and Vineyards is a local family-owned and operated winery in the Rutherford Appellation of Napa Valley, dedicated to growing and making premium, world-class wines while providing excellent hospitality to everyone, with Napa Green certified and sustainable practices.”*



TEHALL LANE

WHEEL





# LEONARDINI VINEYARD

*Saint Helena - Napa Valley*

---

The Leonardini Vineyard was first planted to grapes in the late 1800's when the Lewelling Family settled on a large tract of land on the southern outskirts of St. Helena. The old-time farmers of the area said that the soil, Cortina Gravely Loam, in this particular area was renowned for "black" wine grapes. However, the quality of the harvests varied greatly depending on seasonal rainfall due to the fast draining soils. Because of the uncertainty of yearly harvests, the Lewelling Family turned the vineyard into grazing pastureland in the early 1900's. They also planted grain on a few occasions before leasing the property to the City of St. Helena for a proposed airport. The airport was never constructed but an unused dirt airstrip stood for a number of years.

In 1940, the Lewelling Family sold part of their tract to Fred Boraldo that included what are now the Leonardini Vineyard and the Harvest Inn. During these years, the electric railroad ran trains across the western edge of the property and Boraldo continued to use the land for grazing cattle. Boraldo sold

the property to Richard Geyer in 1973 and in 1979 Geyer built the Harvest Inn on the lot that fronts the main highway (Highway 29).

Wild mustard and various grasses grew in the 14-acre vineyard site behind the Harvest Inn until 1989 when the vineyard was finally replanted under the direction of Whitehall Lane Winery. In 1993 the

Leonardini Family of Whitehall Lane Winery bought the vineyard. Two separate wells were sunk and irrigation added to feed the vines during the growing season.

The vineyard was most recently replanted to Cabernet Sauvignon in 2014 and 2016 utilizing two different rootstocks and four different clones. The rootstocks that were chosen work well in the

specific vineyard blocks and the clones were picked because of their excellent track record for high quality. The canopy and pruning system in place allows maximum sun exposure without over-cropping.

The Wine Spectator selected the Leonardini Vineyard Cabernet Sauvignon as the finest representation for the St. Helena appellation. This is how a St. Helena Cabernet Sauvignon should taste.



## LEONARDINI VINEYARD



BLOCK	VARIETAL	CLONE	ROOTSTOCK	VINE SPACING	COUNT	ACRES PLANTED	DATE PLANTED
1	Cabernet Sauvignon	34.1	GRN1	8 x 4	2,460	1.81	2016
2	Cabernet Sauvignon	34.1	039-16	8 x 5	1,496	1.37	2016
3A	Cabernet Sauvignon	685	GRN1	10 x 4	4,276	3.93	2014
3B	Cabernet Sauvignon	412	GRN1	10 x 4	1,692	1.55	2014
4	Cabernet Sauvignon	8	039-16	10 x 5	3,447	3.96	2005
<b>Total Vines:</b>					<b>13,371</b>		
<b>Total Acres:</b>						<b>14.40</b>	



# FAWN PARK VINEYARD

*Saint Helena - Napa Valley*

---



**F**awn Park Vineyard is located just off the Napa Valley floor on the eastern hillside at the Silverado Trail in St. Helena. This gently sloping vineyard has produced outstanding hillside fruit for more than 40 years. The vineyard is planted primarily to high-power Cabernet Sauvignon with a small two-acre block of Petit Verdot. The vineyard has excellent draining soils with spectacular sun exposure.

The property's history pre-dates the vines or its buildings. It's been told that Native Americans mined the neighboring Glass Mountain, camped at the base of this property and turned the mined obsidian into tools and arrowheads. There is a home on the property that was constructed in 1865 with a second story addition made when Judge Chiles owned the estate in

about 1915. A vintage barn pre-dates the house and was constructed in 1905 using timbers harvested from Howell Mountain. Prior to grapes and after the Native Americans left, this property was used as a dairy to supply milk to the St. Helena Sanitarium (now known as St. Helena Hospital). The Hultman Family owned the property from 1928 to 1978, ran the dairy and also raised chickens there. In 1978 Loren Sorenson purchased the land, planted the vineyard, dug a spring-fed pond and continued a small farm for the local 4-H program.

The property is named Fawn Park Vineyard after the road that borders the southern side of the estate. This road was originally the stagecoach road going up and over Howell Mountain to Angwin and Pope Valley.

## FAWN PARK VINEYARD



BLOCK	VARIETAL	CLONE	ROOTSTOCK	VINE SPACING	COUNT	ACRES PLANTED	DATE PLANTED
1	Cabernet Sauvignon	4	110R, 3309C	7 x 5	10,413	8.36	1980
2	Petit Verdot	400	110R	7 x 5	2,910	2.34	2005
<b>Total Vines:</b>					<b>13,323</b>		
<b>Total Acres:</b>						<b>18.61</b>	



# OAK GLEN VINEYARD

*Oak Knoll - Napa Valley*

---

The Oak Glen Vineyard is situated near a grove of majestic oak trees on the eastern side of the Napa Valley floor. This 25-acre parcel on Silverado Trail is between the towns of Napa and Yountville, close to the Napa River with soils that are gravelly and have excellent drainage to the river. A seasonal creek divides the property and creates a small “island” and secluded grove of oaks.

This idyllic setting has been a glorious homesite since the early 1900’s and served as a vineyard as well as pastureland for grazing cattle. In the early 1900’s Captain Hermosa and Louise Smith bought the property and planted grape vines on approximately 12 acres. Smith was a sea captain who took to farming and lived on the property for over 40 years. In December 1948, Vern and Lucile Stanley purchased the property and continued growing grapes until about 1956 when they pulled the vines and turned the vineyard into pasture to raise dairy cows. They sold the cream to Tomales Bay Creamery located in Tomales Bay until the late 1960’s when the cows were sold and the pasture was used for horses. In 1981, a

group headed by Jack Goodwin purchased the property, removed the last three oak trees on the north east corner and planted the pasture to Chardonnay grapes. This exceptional quality fruit was sold to Mumm - Napa Valley for their sparkling wine program.

In 1996, the Leonardini Family of Whitehall Lane

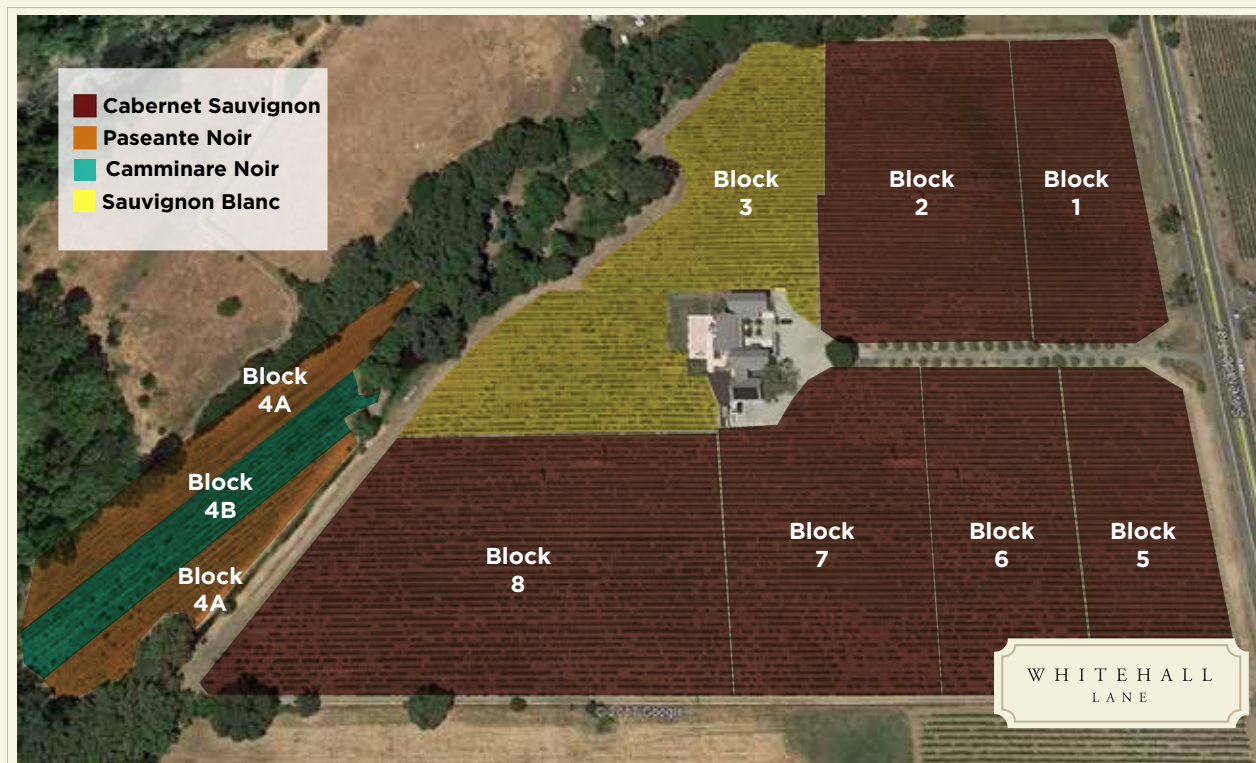
Winery purchased the property with the vision of replanting the vineyard for their growing wine brand. With exceptional gravelly soils and all day sun exposure, they decided to replant the property to Cabernet Sauvignon on the eastern side and Sauvignon Blanc to the west. They replanted the vineyard



in the summer of 1998.

More recently in 2016, two new experimental red grape varieties were planted in the western portion of the vineyard, closest to the Napa River replacing some of the Sauvignon Blanc. This isolated “island” allowed Whitehall Lane to work with UC Davis viticulturists to grow Camminare Noir and Paseante Noir, two new varieties that are highly resistant to Pierce’s Disease, which is common in vineyard blocks close to the Napa River.

# OAK GLEN VINEYARD



BLOCK	VARIETAL	CLONE	ROOTSTOCK	VINE SPACING	COUNT	ACRES PLANTED	DATE PLANTED
1	Cabernet Sauvignon	4	1103P	8 x 5	2,349	2.16	1998
2	Cabernet Sauvignon	4	3309C	8 x 5	3,895	3.57	1998
3	Sauvignon Blanc	Muscat	101-14	8 x 5	3,850	3.54	1998
4A	Peseante Noir	UC Davis	1103P	8 x 5	964	.92	2016
4B	Camminare Noir	UC Davis	1103P	8 x 5	1,001	.92	2016
5	Cabernet Sauvignon	4	110R	8 x 5	2,004	1.84	1998
6	Cabernet Sauvignon	4	Schwarzmann	8 x 5	2,041	1.91	1998
7	Cabernet Sauvignon	7 & 8	Schwarzmann, 5C	8 x 5	2,514	2.48	1998
8	Cabernet Sauvignon	8	5C	8 x 5	3,907	3.59	1998
Total Vines:					22,525		
Total Acres:						25	



# SONOMA STAGE VINEYARD

*Petaluma Gap - Sonoma*

---

**B**efore there were grapevines, there were cows. And before the cows, there were horses roaming the property now known as Sonoma Stage Vineyard on the southeastern edge of the Petaluma Gap Appellation in Sonoma County.

Today it is home to 12 small blocks of world-class Pinot Noir grapes and two smaller blocks of Chardon-

nay. But this 57-acre vineyard property was originally part of the much larger Hinkston Ranch dating all the way back to the 1800's. It became the Circle W Ranch, an equestrian farm owned by George and Mildred Webb and in 1954 they sold the ranch to Sir John Galvin of Australia. Sir Galvin

renamed the property Triangle G Ranch and took to grazing cattle on the land. The Triangle G Ranch consisted of six separate parcels that stretched for six miles along the southern ridge of Sonoma Mountain reaching 1,946 feet at its highest point. After a failed attempt to subdivide the Triangle G Ranch into 34 home sites, the parcel was sold, planted to Pinot Noir grapes and renamed Sonoma Stage Vineyard.

It was the Hyde Family who planted the Pinot Noir vineyard in 1999, primarily grafting Swan and Calera Pinot Noir clones to rootstock. These renowned clones originated as unregulated "suitcase" clones that were reportedly taken from Burgundy's greatest vineyards many years ago and brought to California in a suitcase. The Sonoma Stage Vineyard is an extremely fortunate

beneficiary of this clandestine act.

For more than 15 years the grapes were sold to a "who's who" list of top California Pinot Noir wine producers, and in 2019 the Leonardini Family of Whitehall Lane Winery purchased the vineyard. They planted two new blocks of Chardonnay and two additional blocks of Pinot Noir in 2020.



The distinctive topography, persistent winds and cool fog make this vineyard and the Petaluma Gap unique. The gap offers a tunneling effect as the cool winds and fog move from the Pacific Ocean to the San Pablo Bay. The vineyard ripens slowly each year allowing a later harvest time that results in stunningly complex flavors while preserving the natural acidity in the grapes.

# SONOMA STAGE VINEYARD



BLOCK	VARIETAL	CLONE	ROOTSTOCK	VINE SPACING	COUNT	ACRES PLANTED	DATE PLANTED
1-N	Pinot Noir	Calera	3309C	6 x 8	4,369	4.8	1999
1-S	Pinot Noir	Swan	3309C	6 x 8	4,087	4.5	1999
2-W	Pinot Noir	Swan	3309C	4 x 8	2,222	1.63	2000
2-E	Pinot Noir	Calera	3309C	4 x8	2,274	1.67	2000
3A	Pinot Noir	Swan	101-14	6 x 8	2,328	2.57	1999
3B	Pinot Noir	Calera	101-14	6 x 8	2,287	2.52	1999
3C	Pinot Noir	667	101-14	6 x 8	2,144	2.36	1999
3D	Pinot Noir	115	101-14	6 x8	2,186	2.41	1999
4-N	Pinot Noir	Calera	3309C	6 x 8	1,903	2.09	2000
4-S	Pinot Noir	Swan	3309C	6 x 8	1,953	2.16	2000
5-W	Chardonnay	69 (76)	101-14	4 x 6	1,927	1.06	2020
5-E	Chardonnay	39 (78)	101-14	4 x6	1,925	1.06	2020
6-N	Pinot Noir	Pommard	101-14/Schw	4 x 7	3,516	2.26	2020
6-S	Pinot Noir	115	101-14	4 x 7	3,582	2.30	2020
Total Vines:					36,703		
Total Acres:						57.28	



# RASSI VINEYARD

*Sonoma Valley - Sonoma*

---



The Rassi Vineyard is located in a gravel stratum on the eastern slope of Sonoma Valley at the base of the Mayacamas Mountain range. This hillside location has excellent afternoon sun exposure throughout the long, warm summer and is ideally suited for growing Cabernet Sauvignon. The grapes from this meticulously farmed vineyard have been used in countless acclaimed wines over the years.

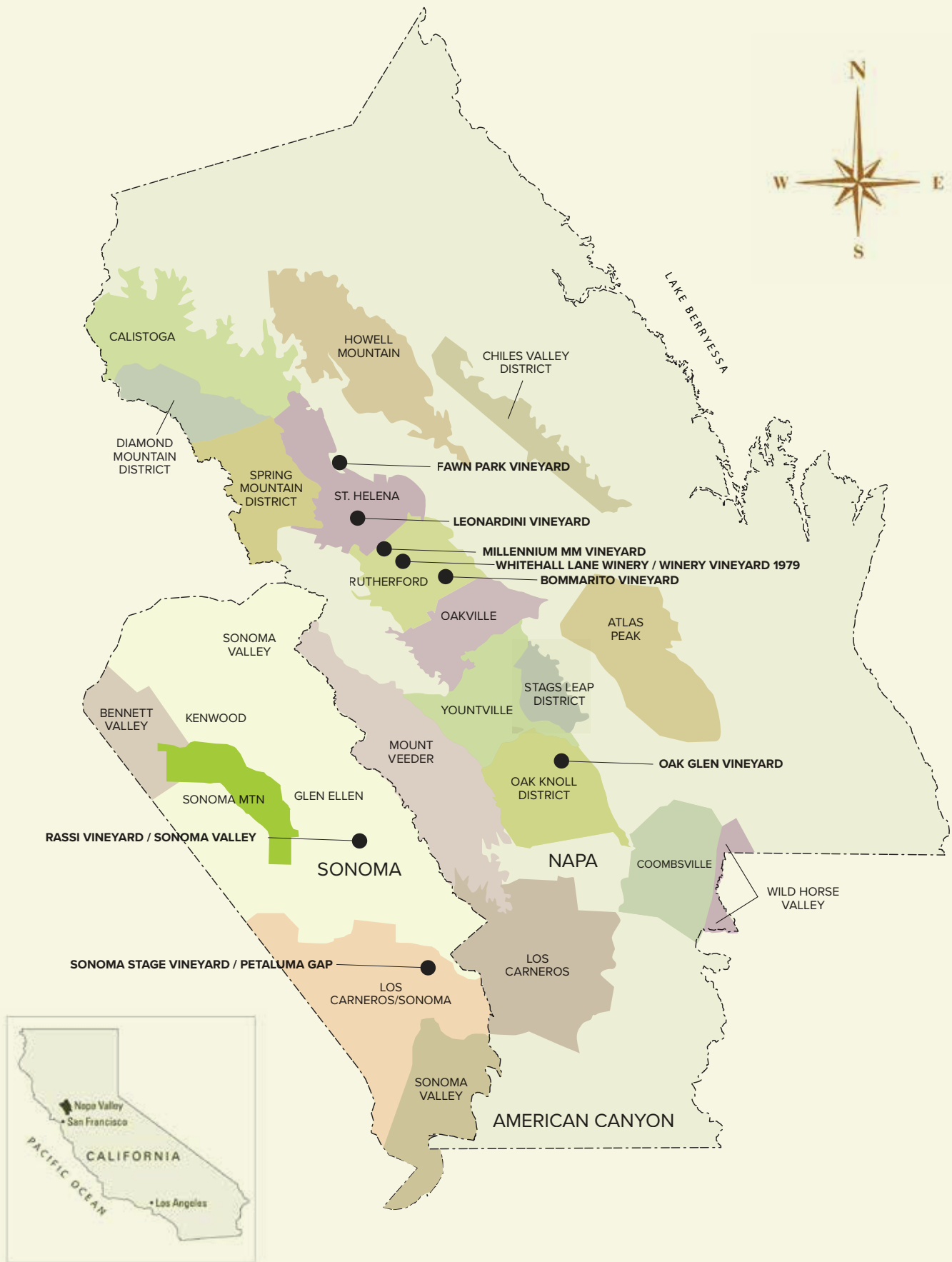
The property was originally part of the 1,864 acre Rancho Aqua Caliente land grant of General Vallejo. In the 1940's this 16-acre parcel became part of the family ranch for the Claude and Evelyn Duncan family. Their grandson Dennis Rassi tended to the Duncan-Rassi Vineyard before selling it in 2012 to the Leonardini Family of Whitehall Lane Winery.

## RASSI VINEYARD



BLOCK	VARIETAL	CLONE	ROOTSTOCK	VINE SPACING	COUNT	ACRES PLANTED	DATE PLANTED
1A	Cabernet Sauvignon	169	110R	4 x 10	363	0.33	2011/12
1B	Cabernet Sauvignon	337	1103P	5 x 10	2,151	2.47	2001
2	Cabernet Sauvignon	337	5BB	5 x 10	2,517	2.89	2001
3	Cabernet Sauvignon	337	110R	5 x 10	2,360	2.71	2001
4	Cabernet Sauvignon	341	110R	5 x 10	505	0.58	2001
5	Cabernet Sauvignon	191	110R	5 x 10	958	1.10	2001
6	Cabernet Sauvignon	15	1103P	5 x 10	932	1.07	2001
7	Cabernet Sauvignon	15	5BB	5 x 10	645	0.74	2001
<b>Total Vines:</b>					<b>10,431</b>		
<b>Total Acres:</b>						<b>15.98</b>	





WHITEHALL  
LANE

1563 St. Helena Hwy / St. Helena, CA 94574 / Napa Valley  
(707) 963-9454 [www.whitehalllane.com](http://www.whitehalllane.com)